

# MONTHLY MEMBERSHIP PROGRESS REPORT

LOCATION REP OF GHANA

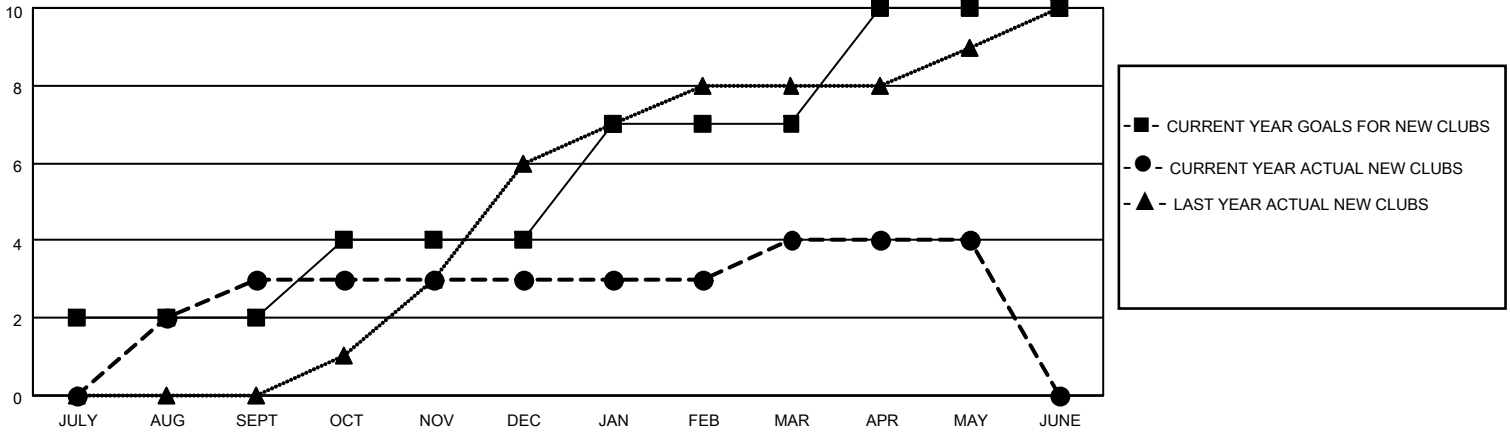
District 418

Results as of: 5/31/2022

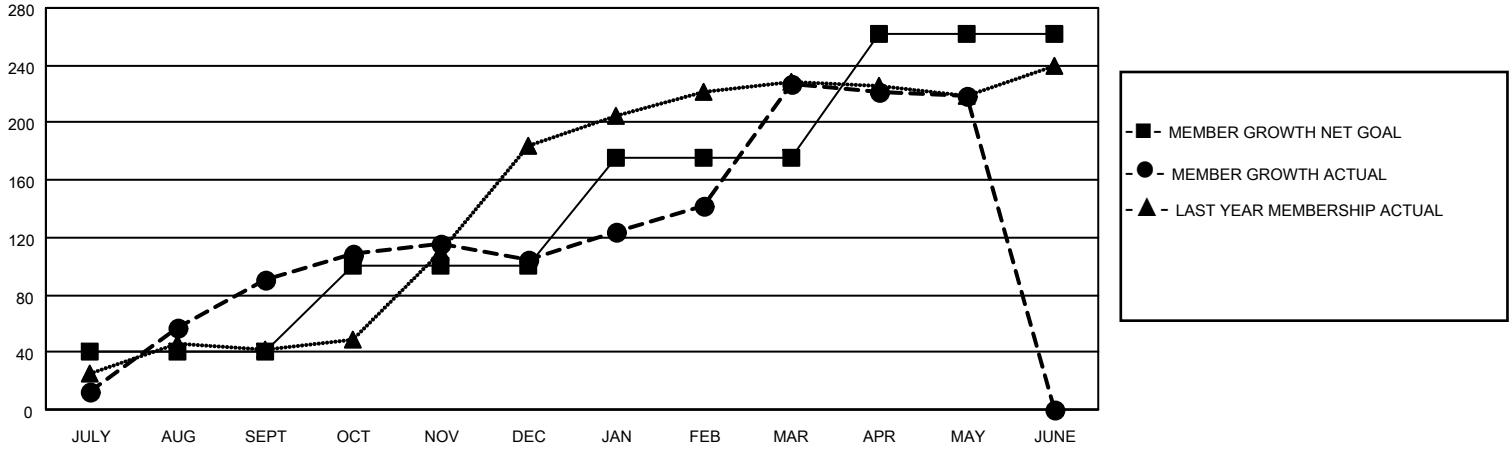
Clubs			
RESULTS FOR 2021-2022			
QUARTER	NEW CLUB GOAL	NEW CLUBS	DROPPED CLUBS
JULY/AUG/SEPT	2	3	0
OCT/NOV/DEC	2	0	0
JAN/FEB/MAR	3	1	0
APR/MAY/JUNE	3	0	0

Members			
RESULTS FOR 2021-2022			
QUARTER	MEMBER GROWTH NET GOAL	MEMBER GROWTH ACTUAL	DROPPED MEMBERS ACTUAL (including transfers)
JULY/AUG/SEPT	40	113	19
OCT/NOV/DEC	60	103	90
JAN/FEB/MAR	75	138	9
APR/MAY/JUNE	87	31	36

**GOALS AND ACTUAL NEW CLUBS CUMULATIVE**



**GOALS AND ACTUAL MEMBERS CUMULATIVE**



**DROPPED CLUBS: 0**

**36 CLUBS OF 41 ADDED 1 OR MORE NEW MEMBERS**

**GENDER DISTRIBUTION**

MALE	765 (61.10%)
FEMALE	487 (38.90%)
NON BINARY	0 (0.00%)
PREFER NOT TO ANSWER	0 (0.00%)

**DROPPED MEMBERS**

DECEASED	2
CLUB CANCELLED	0
OTHER	152
<b>TOTAL</b>	<b>154</b>

[CLICK HERE FOR CUMULATIVE MEMBERSHIP DATA](#)

TOTAL FAMILY UNIT MEMBERS	21
FAMILY MEMBERS PAYING HALF DUES	11